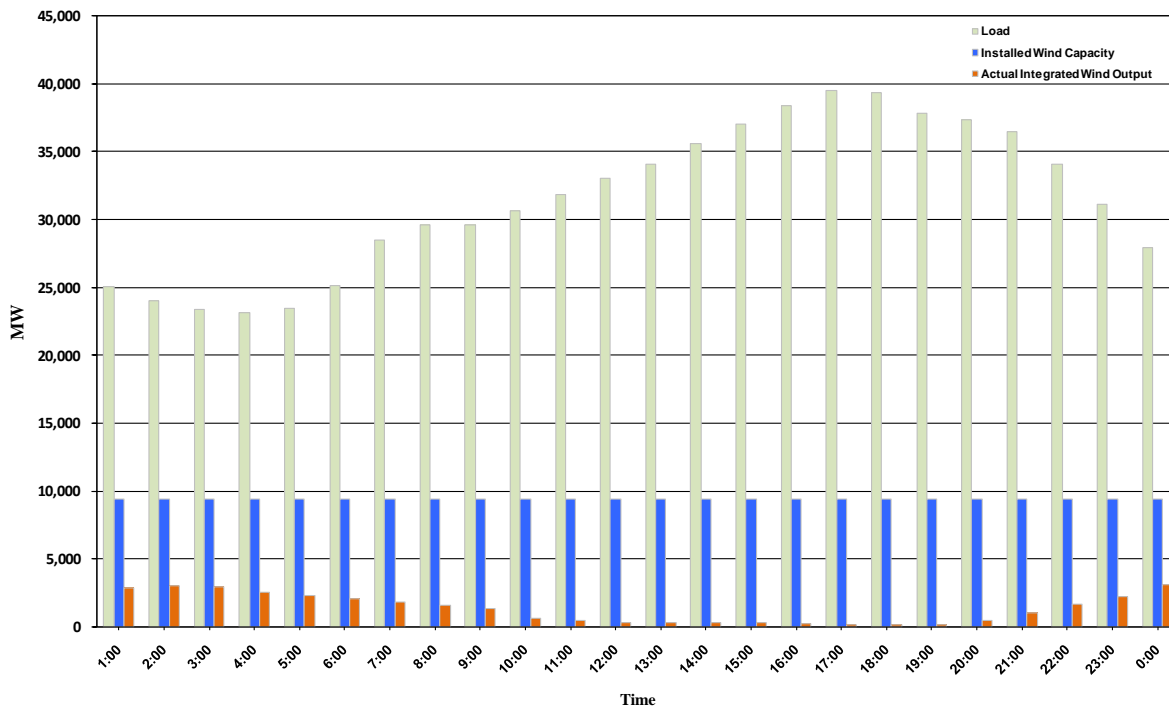




ERCOT Grid Operations Wind Integration Report: 10/07/10

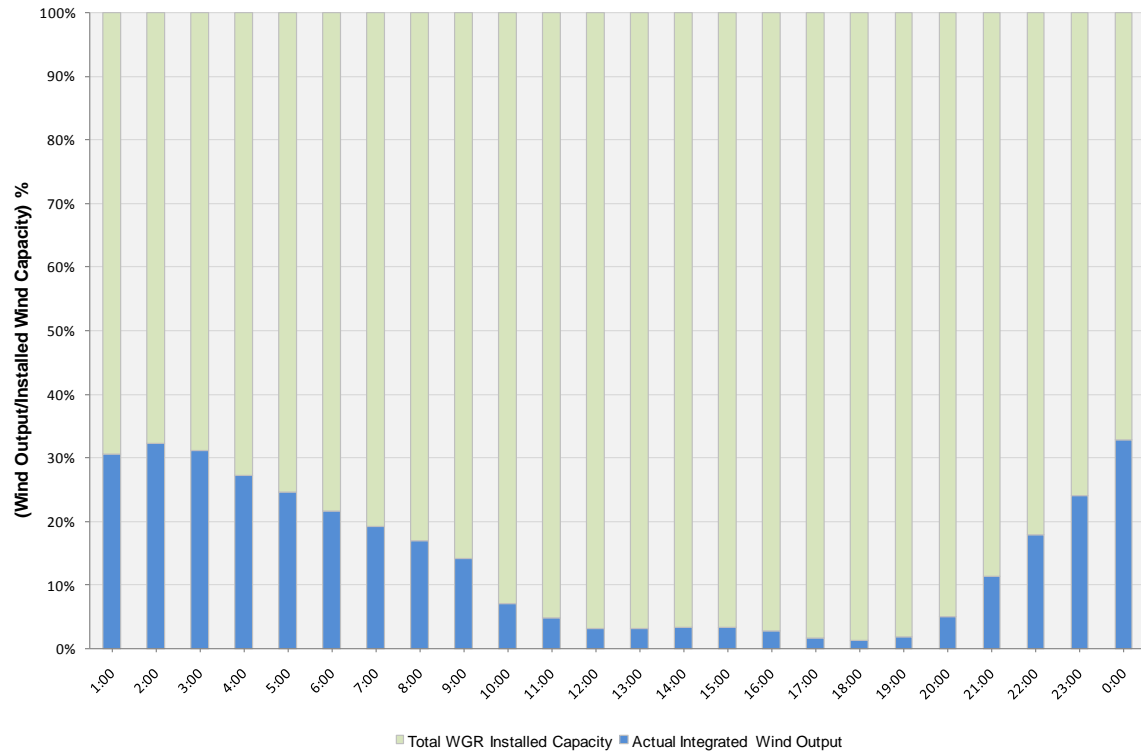
| | |
|----------------------|------------------|
| Peak Load | 39,481 MW |
| Load Peak Hour | 17 |
| Wind Record 06/12/10 | 7016 MW |
| Max Wind value | 3486 MW |
| Wind Peak Hour | 23:59:52 |
| Wind Integration % | 13.08 |

Hourly Average Actual Load vs. Actual Wind Output
10-07-2010

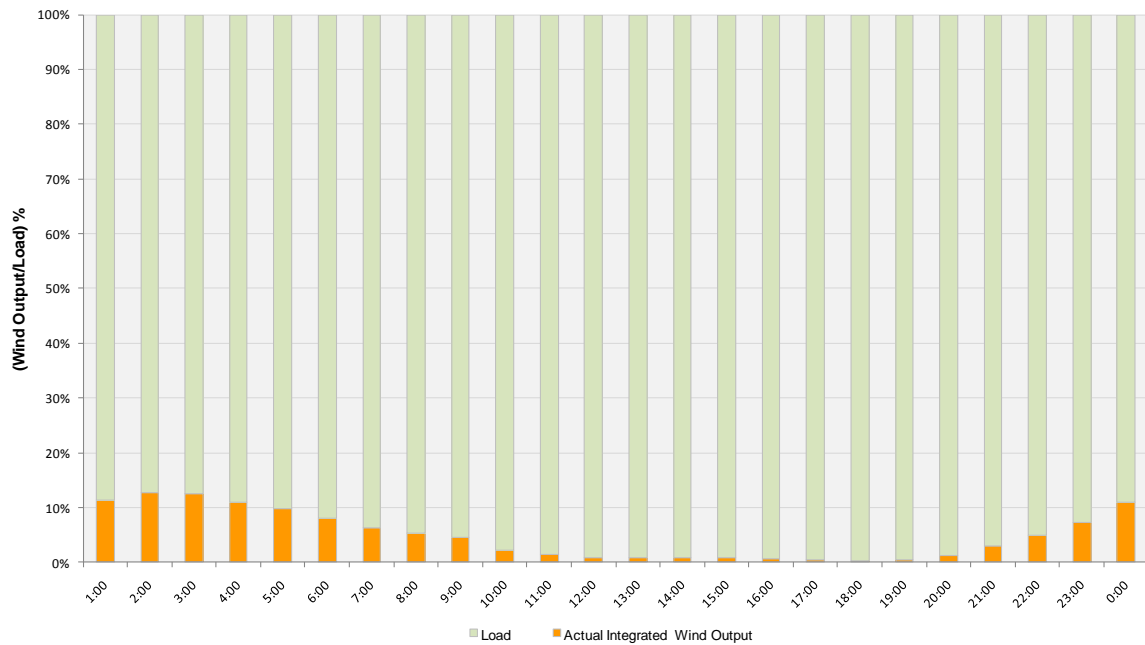




Actual Wind Output as a Percentage of the Total Installed Wind Capacity
10-07-2010



Actual Wind Output as a Percentage of the ERCOT Load
10-07-2010





ERCOT Load vs. Actual Wind Output 09/30/10 - 10/07/10

